

# THE BISHOP DUPPAS BOWLERS' HANDBOOK

EVERYTHING YOU NEED TO KNOW

OR

EVERYTHING YOU KNEW BUT HAVE NOW FORGOTTEN



**BOWLS:** A mysterious and ancient game played by people old enough to know better, using balls carefully designed to go in the wrong direction.

# THE BISHOP DUPPAS BOWLERS' HANDBOOK

## CONTENTS

THE BOWLER

THE GREEN

THE CLUBHOUSE

THE EQUIPMENT SHED

WHAT TO DO IF YOU WANT TO PLAY IN A CLUB MATCH

PLAYING FOR THE CLUB

KEEPING WELL INFORMED

THE CAR PARK AND SECURITY

THE GAME



Written by Jerry Spearman

## CONTENTS in MORE DETAIL

### THE BOWLER

1. Benefits of being a member of Bishop Duppas Bowls Club
2. Recruitment
3. Contact details
4. Bowls
5. Bowling bag
6. Clothing
7. Where to change

### THE GREEN

1. Playing season
2. Opening times
3. Caring for the green
4. Laying out the green

### THE CLUBHOUSE

1. Keys and security
  - Accessing the club
  - Security
2. How the clubhouse is used
  - Club nights
  - Thursday drive
  - Bridge club
  - Canasta and Crib
  - Annual Presentation Evening
  - Croquet
  - Social programme
3. Noticeboards, notices and where to find things
  - Scorecard
  - Blue Noticeboards
  - Bowls stickers
  - The Windowsill
  - Match sheets and selection for matches
  - Location of our opponent's club houses
  - Equipment
  - Duty Rotas
  - Coaching
  - Competitions
  - Clothing
  - Clubhouse hire
4. The kitchen
5. The bar
6. Storage - where things are kept

## THE EQUIPMENT SHED

1. What's in there?

## WHAT TO DO IF YOU WANT TO PLAY IN A CLUB MATCH

Match sheets  
Reserves for matches

## PLAYING FOR THE CLUB

Matches  
Internal competitions  
Esme Fraser League  
Kangaroo League

## KEEPING INFORMED

The website  
Social media  
Twitter  
Facebook

## THE CAR PARK & SECURITY

1. Entry code- ask someone if you have forgotten.
2. Barrier gate and Bollards

## THE GAME

1. All you need to know to become World Champion.



Last year's finals day.

## THE BOWLER

### 1. Benefits of being a member of Bishop Duppas Bowls Club: -

Enjoyment of bowling,  
we all find it infuriating at times!



Developing a new skill

Playing in a team and in  
competitions



Opportunities to help others



Making new friends



Opportunities to socialise

## **2. Recruitment**

New and experienced players are always welcome at our club. If you have friends that might be interested in playing bowls let the Captains or club secretary know and we will make the appropriate arrangements.

## **3. Contact Details**

Our Club Secretary will provide a list for Full and Social members contact details

## **4. Bowls**

Thankfully, only one shape, but many different sizes, weights, grip and draw (amount of turn) and now in many pretty colours.

You are advised to get the feel for the game by using sets of bowls that the club has and then buy a set of second-hand bowls (about £45 - £60). A new set can cost over £300 !

There are many club bowlers that could advise you, but you may find it beneficial to consult one of the club coaches.



## **5. Bowling Bag**

Many bowlers use wheeled hand luggage, or they buy special bowling bags. Besides clothes and shoes, bowlers might also decide to buy a measuring tape, chalk/marker spray, cleaning cloth and a bowl cleaning polish.

## **6. Clothing**

Be prepared! When playing it can be hot, cold, wet, dry, calm and windy. Hopefully not all on the same day.

As you are outside, think layers.

Bowlers have wets and dries because if a game has started and it rains, the game will continue. Bowling gloves can be worn to aid gripping the bowl.



White or coloured smart casual clothes can be worn when not playing for the club. When representing the club or playing on final's day club shirts are worn with grey or white below the waist.



Tailored shorts can be worn.



You **must** change into flat soled shoes when on the green.

## 7. Where to change

The club is fortunate to have two large changing rooms.

They can be found via a door in the middle, on the left, as you enter the club house.

Visiting teams are directed to these rooms when they arrive for a club competition, but they are open to all bowlers.



Many bowlers will arrive ready to bowl and just need to change their shoes, so they will use the large gazebo on the right as you enter the club.



Bowling bags and coats are often left in here, neatly, while they bowl.

Bowlers can often need many layers especially when moist weather is forecast.

Some bowlers use their car as a mobile clothes and equipment carrier. Very handy if you arrive in greys and you should be in white!



## THE GREEN

### 1. Playing season

The playing season runs from late April to September 30th. The club usually holds the finals of its internal competitions over the first weekend of September.

### 2. Opening times

The green is open from 10.00 every day except on

Thursday when it is open by 1 pm and Saturday from 10.30

The delayed opening times are to allow for the maintenance of the green.

### 3. Caring for the green

Having changed into flat soled shoes never run on the green.

Place the bowls carefully onto the surface, never drop them.

Avoid walking in the sunken ditches around the outside.

Often, before play can start, the worm casts must be broken up by being swished. The swish poles or swishers can be found in the equipment shed above the door.

(10 minutes swishing is equal to 20 minutes gentle aerobic exercise!)

An example of a very swish swisher.



### 4. Laying out the green

There are yellow and orange markings on the top plastic edges of the green, these are for the rink numbers, 1 to 6.

**Rink 6** is always in the bottom right hand corner (near the equipment shed) when going **away** from the clubhouse **but** is **Rink 1** when going **across** the green.

There are also yellow or orange markings on the vertical surfaces just below the edge. These are for the white rink markers.

These are very useful when you bowl with the wrong bias, as it tells you when your bowl has gone out of bounds and has joined the adjacent game!

There is a colour chart inside the equipment shed. Different colours are used on different days to spread the wear and tear on the green

## THE CLUBHOUSE



## 1.Keys and security

### **Accessing the club**

On joining, you will be given the entry codes for the gate padlock and club house door. The key that opens the equipment shed is on a hook on the left as you enter the clubhouse.

We ask that everyone be conscious of the need to make sure that the club is left secure after play. **Make sure the combination lock on the gate is not left showing the entry combination.** The club house door needs to be double checked to make certain it has been closed and that the key pad has engaged.

Each member of the club is responsible for their own belongings and any valuables should not be left unattended.

## 2.How the clubhouse is used

### **Club nights**

Every Tuesday evening during the season, from about 6.00pm onwards, the Club has its "Roll up." This is an informal practice session and all Club members are invited to join in. The bar is open and members can sit and chat. Often there are team sheets to sign or other notices to read. Sometimes competition matches are booked for club night. It is the perfect occasion to meet your fellow members.

### **Thursday drive**

On Thursday afternoons from 3.00 - 5.00 a structured roll up is organised in which a small cash prize is played for. To assist the organiser, you are asked to be at the green by 2.40 and to be "booked in" by 2.45. The booking in sheet is usually on the table inside the tent.

### **Bridge club**

On Thursdays during the winter months a Bridge Club meets in the clubhouse to play for around two hours in the afternoon. This is not exclusive to Bishop Duppas, but several of our members do play regularly in these sessions.

### **Canasta and Crib**

Also, during the winter months there is an opportunity to play crib on Wednesday mornings and canasta on Friday afternoons.

### **Annual Presentation Evening**

In November or early December, the Club holds its Presentation Evening at a local venue. Look out for a notice in the club house.



## **Social Programme**

Out of season, the Club is open every first Tuesday of the month from about 7.00pm. On these nights we hold various social events such as Skittles, Beetle Drive, Quiz Night, and Race Evening; and of course, the bar is open. The social programme and other outside events are organised by our Social Committee. Details are posted in the clubhouse by the bar.

These are very well attended, and we do hope you will join in and enjoy these functions.

### **3. Noticeboards, notices and where to find things.**

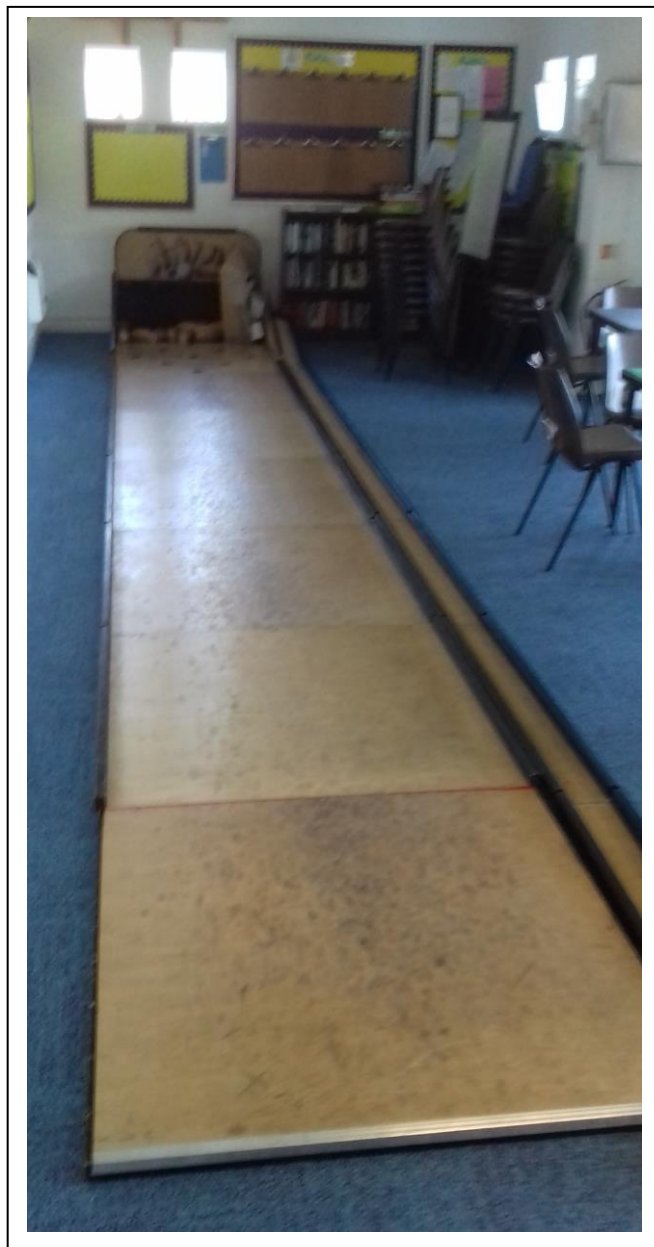
We have an online rink booking system.

#### **Scorecards**

These are kept in a holder that is towards the rear of the pavilion on the right-side wall.

#### **Blue Noticeboards**

These large boards contain a great deal of information and posters of forth coming events. The first place to look for what is happening at the club is our website.



## **Bowls stickers**

The club stickers are made available from the bar and are free of charge to members. Bowl stickers are required if playing in club matches to facilitate scoring and playing in general.

Helpful Hint: The small sticker should be on the **left** when bowling forehand and on the **right** when bowling backhand, unless you are left-handed when it is the other way around. If you don't notice this, the bowl will head off in the wrong direction! This mistake is often made by many bowlers. All part of the fun of bowling!

Traditionally, you also bought the first round at the bar.

**The Windowsill** on the right at the back of the clubhouse contains: -

- **The Management Committee Minutes**
- **The External Competition Rule Folder**
- **Constitution and rules**
- **Policy Documents and Job Descriptions**
- **The History of the Club written by Laurie Gascoigne**

## **Match sheets and selection for matches**

The rear wall of the pavilion holds the match sheets.

## **Location of our opponent's club houses**

All clubs have websites but we still keep a book of maps that shows all our opponents' locations and is held in a blue folder behind the bar.

## **Equipment**

Members may occasionally make unwanted equipment available for sale. A notice containing details of these items is posted on the notice board by the bar or on the table on the right as you enter the clubhouse.



## **Duty Rotas**

To help keep the cost of membership as low as possible the club does not pay for a barman, cleaners or catering staff.

Club members are asked to join a team to clean the clubhouse, help behind the bar and help with club matches. Lists of names and dates are put on the notice boards by the bar.

Many people volunteer to help at other times as well.

The Gardening group look after the flower beds and hedges around the green and the flower beds at the front of the club. They also help maintain the benches and help putting up the marquee.

The Social group help with organizing the winter programme of events and numerous events during the bowling season.

The Club is noted for being "mixed" and consequently all members without exception are required to be on both the tea and cleaning rota, which you will do normally once or twice during the season. These lists are posted on the notice board alongside the bar. They are organised by the Social Committee. The duties are not onerous, and the organiser will ensure new members are teamed up with more experienced members when they are on duty for the first time.

## **Coaching**

If you are a new bowler or feel that you would benefit from some guidance from a qualified coach, the club will arrange this for you. Speak with Andy Gibbon, Jerry Spearman or Ann Bamber. They will be able to cover all the aspects of the game of bowls and will offer advice on the equipment you will need.

## **Competitions**

The details of each competition are shown on a set of transparent plastic notice boards on the right side of the clubhouse.

## Clothing

Carole Jack volunteers to look after sales of new club clothing. Carole also has rails of second hand clothing which can be found in the female and male changing room. Items can be purchased for a small donation towards club funds.

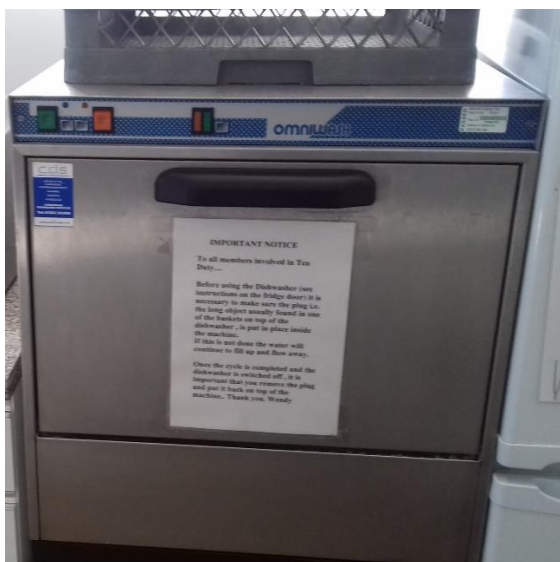


## Clubhouse hire

If you are organizing a social event the Bishop Duppas clubhouse & bar is available for hire at a very competitive rate. Please contact the club Secretary.

## 4. The kitchen

The kitchen is very well equipped and is available for members use. Please leave the kitchen clean after use. All the crockery, cutlery and tablecloths for the club teas is stored in the kitchen cupboards.



The very efficient dishwasher has a set of instructions on the outside.

**Only use any of the electrical items if you have been shown how to use them safely.**

There is also a microwave, fridge freezer and a 2 plate hob and oven.

## 5. The bar



As you wait to be served, don't forget to **"notice"** the important **notices** on the **noticeboards**!

This is a most important source of revenue for the club and is controlled by the bar manager. Normally, the bar is staffed by the bar manager or the designated volunteers.

A rota is prepared for the season, which most members support once or twice during the season.

If you invite non-members into the bar, please remember to sign them in. The register is kept behind the bar.

N.B. Members partners are automatically enrolled as Associate Members and do not therefore have to be "signed in".

## 6.Storage - where things are kept

The cupboards between the two changing rooms house: -

- large cleaning items, vacuum, brushes, mops and buckets.
- for club teas there are wooden numbers which match the numbers of the rinks used in the match
- for club matches, new jacks, score cards and club score card holders
- the roll-up wooden numbers for Thursday
- a bingo wheel and balls
- a tombola drum
- the club and Middlesex flags
- cribbage cards and boards

The large cupboard in the Gents is used for the storage of cleaning items.

The locked cupboard in the men's changing room contains a large collection of DIY tools and pots of paint.

There are bookcases at the back of the clubhouse.. Books are donated to the club and can be bought to help raise money for the club. Once read, and hopefully enjoyed, they can be donated back to the club.

The Gents and Ladies toilets have shelves for the storage of sets of bowls. These are used on our open days.

The outside store room houses the croquet equipment, gazebos, the marquee, the barbeque and gas cylinders, the Christmas tree and decorations and the parasols.

## THE EQUIPMENT SHED



### What is in there?

- Pushers: to help round up the bowls after each end has been played.
- Scoreboards: to show the number of ends played and the score. Double sided so members watching by the clubhouse can follow the game.
- Jacks: small white ball which is used to start each end.
- Rink markers: rectangular pieces of metal that hang on the edge of the rink at both ends and at the sides.
- Numbers: these are positioned in the centre of each rink at both ends.
- Measuring sticks: to check that the mat and jack are not too near the ditch.
- Swish poles called swishers, above the door, for removing worm casts.
- Coloured markers: these are used when the jack is hit into the ditch.
- Mats: these are placed lengthwise on the centre of the rink.

## WHAT TO DO IF YOU WANT TO PLAY IN A CLUB MATCH

### **Match sheets**

The rear wall of the pavilion holds the match sheets.

Members indicate on these that they would like to be considered for selection in club matches.

The selection for matches takes place on Tuesday mornings for the coming week end games and any mid-week games in the following week. If you need a lift to an away match indicate this by putting the letter "L" alongside your name on the match sheet.

Try and car share as much as possible as parking is often an issue.

### **Reserves for matches**

It is best practice to check with the Captain of the Day regarding the need to travel to an away game if you are selected as a reserve.

If it is a home match you should try to be available at the club in case you are needed. If you are in any doubt, please consult the Captain of the Day.

## PLAYING FOR THE CLUB

### **Matches**

The club plays friendly mixed matches during the week and on both days of the weekend. In addition, our Ladies have some mid-week "friendlies". There are EXTERNAL competitive league matches for women and men, and we compete at national and county level and in the NW Surrey, the Surrey League, the South Middlesex League and the Thames Valley league.

After playing in matches, it is expected that the home team will buy a drink for their opposite number who, generally, will reciprocate.

There will be match fee to pay of £2.00. Near the end, the two captains of the day will discuss the game and announce the scores.

There might be a raffle costing £1 for two strips of numbers.



## **Internal Competitions**

Each season the club organises several internal competitions. The entry form for these is circulated with the membership renewal forms in late March/early April and the draw for the various competitions is held on a club night in late April/early May.

The matches in each round of every competition are shown in a folder of laminated sheets situated at the end of the wall separating the trophy shelves from the club match sheets.

### **Esme Fraser League**

We run an internal league on Tuesday afternoons, and this provides the opportunity for competitive practice.

### **Kangaroo League**

We also run an internal league on Friday afternoon of Australian Pairs

Members are invited to sign up for the leagues as part of the membership renewal process.

The details of the current leagues are posted on the blue notice boards in the clubhouse.

It is important for members to regularly check the noticeboards to see if they are playing. If you find you cannot play, then you must either tell your team or the organiser.

## KEEPING WELL INFORMED

### **The website**

The Webmanager oversees the club web site and it is a growing source of club related information. The web site address is [www.bishopduppasbowlsclubshepperton.hitssports.com](http://www.bishopduppasbowlsclubshepperton.hitssports.com)

On joining the club you will be given details of how to access the members only section of the site.

### **Social media**

#### Bishop Duppas WhatsApp group

This is organised by Andy Gibbon. If you give him your mobile number, he will add you to the group. The chat group is called the "Bishop Duppas BC"

#### Twitter

This is an external site. The profile is called "Bishop Duppas Bowls Club Shepperton" and our username is @DuppasClub.

Facebook This is also an external site.



## **Croquet**

Among our non-bowls activities is the playing of croquet on our practice rink. This activity is usually held on Monday, Wednesday & Friday afternoons.

## THE CAR PARK & SECURITY

On joining you will be given the entry codes for the gate padlock.

ONCE OPENED, IT IS VERY IMPORTANT TO CHANGE THE COMBINATION TO KEEP THE NUMBER SECRET.

### **Barrier Gate and Bollards**

These have recently been fitted and members of the committee are responsible for making sure they are open on club days.

## AND FINALLY,.....THE GAME

Practice doesn't make perfect, but it certainly helps!

Learn by watching others

Don't be afraid to ask, but choose the right moment

Remember, it is all on the day.

Brilliant one day and then hopeless the next!

